



(No.): ETR24305709

(Date): 12-Apr-2024

(Page): 1 of 23

Test Report

6-8 (NO. 6-8, ZHONGHUA RD., SHULIN DIST., NEW TAIPEI CITY 23860, TAIWAN)

(The following sample(s) was/were submitted and identified by the applicant

as)

BASIC INFORMATION

Type of Product

POWER LED

Supplier Company Name

EVERLIGHT

Address

NO.6-8, ZHONGHUA RD., SHULIN DIST., NEW TAIPEI CITY 23860, TAIWAN

Tel / Fax / Email

TEL:886-2685-6688

FAX:886-2685-6699

Sample preparation

CUTTING

Test Method

RoHS: IEC 62321, Halogen: BS EN 14582

MDL

Cd, Pb, Hg: 2 mg/kg, PBBs/PBDEs: 5 mg/kg, Halogen: 50 mg/kg

:

(Sample Receiving Date) : 28-Mar-2024

(Testing Period) : 28-Mar-2024 to 12-Apr-2024

(Test Results) : (Please refer to following pages).

PIN CODE: E5DBCD6A

This document is issued by the Company subject to its General Conditions of Service printed overleaf, available on request or accessible at <https://www.sgs.com.tw/terms-of-service> and, for electronic format documents, subject to Terms and Conditions for Electronic Documents at <https://www.sgs.com.tw/terms-of-service>. Attention is drawn to the limitation of liability, indemnification and jurisdiction issues defined therein. Any holder of this document is advised that information contained hereon reflects the Company's findings at the time of its intervention only and within the limits of client's instruction, if any. The Company's sole responsibility is to its Client and this document does not exonerate parties to a transaction from exercising all their rights and obligations under the transaction documents. This document cannot be reproduced, except in full, without prior written approval of



Test Report

(EVERLIGHT ELECTRONICS CO., LTD.)
6-8 (NO. 6-8, ZHONGHUA RD., SHULIN DIST., NEW TAIPEI CITY 23860, TAIWAN)

(Test Requested) : (1) RoHS 2011/65/EU Annex II (EU) 2015/863
, DBP, BBP, DEHP, DIBP (As specified
by client, with reference to RoHS 2011/65/EU Annex II and amending Directive
(EU) 2015/863 to determine Cadmium, Lead, Mercury, Cr(VI), PBBs, PBDEs, DBP,
BBP, DEHP, DIBP contents in the submitted sample(s).)

(2) PAHs (As specified by client, to test PAHs and
other item(s).)

(Conclusion) : (1) , DBP, BBP,
DEHP, DIBP RoHS 2011/65/EU Annex II (EU) 2015/863
(Based on the performed tests on submitted sample(s), the test
results of Cadmium, Lead, Mercury, Cr(VI), PBBs, PBDEs, DBP, BBP, DEHP, DIBP
comply with the limits as set by RoHS Directive (EU) 2015/863 amending Annex II
to Directive 2011/65/EU.)

(2) (AfPS) GS
PAHs 3 (Based upon the performed tests on the
submitted sample(s), the test results of PAHs (15 items) comply with the limits of
PAHs requirement (Category 3) Other consumer products as set by German
Committee on Product Safety (AfPS) GS PAHs.)

(Test Part Description)

- No.1 : (BODY)
- No.2 : (PLATING LAYER OF SILVER COLORED METAL PIN)
- No.3 : (BASE MATERIAL OF SILVER COLORED METAL PIN)
- No.4 : () (SILVER COLORED METAL PIN (INCLUDING THE PLATING LAYER))

(Test Results)

(Test Items)	(Method)	(Unit)	MDL	(Result)			(Limit)
				No.1	No.2	No.3	
(Cd) (Cadmium (Cd))	IEC 62321-5: 2013	mg/kg	2	n.d.	---	---	100
(Pb) (Lead (Pb))	(With reference to IEC 62321-5: 2013, analysis was performed by ICP-OES.)	mg/kg	2	8.65	---	---	1000

Test Report

(EVERLIGHT ELECTRONICS CO., LTD.)

6-8 (NO. 6-8, ZHONGHUA RD., SHULIN DIST., NEW TAIPEI CITY 23860, TAIWAN)

(Test Items)	(Method)	(Unit)	MDL	(Result)			(Limit)
				No.1	No.2	No.3	
(Hg) (Mercury (Hg))	IEC 62321-4: 2013+ AMD1: 2017 (With reference to IEC 62321-4: 2013+ AMD1: 2017, analysis was performed by ICP-OES.)	mg/kg	2	n.d.	---	---	1000
Cr(VI) (Hexavalent Chromium Cr(VI))	IEC 62321-7-2: 2017 - (With reference to IEC 62321-7-2: 2017, analysis was performed by UV-VIS.)	mg/kg	8	n.d.	---	---	1000
(Monobromobiphenyl)	IEC 62321-6: 2015 / (With reference to IEC 62321-6: 2015, analysis was performed by GC/MS.)	mg/kg	5	n.d.	---	---	-
(Dibromobiphenyl)		mg/kg	5	n.d.	---	---	-
(Tribromobiphenyl)		mg/kg	5	n.d.	---	---	-
(Tetrabromobiphenyl)		mg/kg	5	n.d.	---	---	-
(Pentabromobiphenyl)		mg/kg	5	n.d.	---	---	-
(Hexabromobiphenyl)		mg/kg	5	n.d.	---	---	-
(Heptabromobiphenyl)		mg/kg	5	n.d.	---	---	-
(Octabromobiphenyl)		mg/kg	5	n.d.	---	---	-
(Nonabromobiphenyl)		mg/kg	5	n.d.	---	---	-
(Decabromobiphenyl)		mg/kg	5	n.d.	---	---	-
(Sum of PBBs)		mg/kg	-	n.d.	---	---	1000
(Monobromodiphenyl ether)		mg/kg	5	n.d.	---	---	-
(Dibromodiphenyl ether)		mg/kg	5	n.d.	---	---	-
(Tribromodiphenyl ether)		mg/kg	5	n.d.	---	---	-
(Tetrabromodiphenyl ether)		mg/kg	5	n.d.	---	---	-
(Pentabromodiphenyl ether)		mg/kg	5	n.d.	---	---	-
(Hexabromodiphenyl ether)		mg/kg	5	n.d.	---	---	-
(Heptabromodiphenyl ether)		mg/kg	5	n.d.	---	---	-
(Octabromodiphenyl ether)		mg/kg	5	n.d.	---	---	-
(Nonabromodiphenyl ether)		mg/kg	5	n.d.	---	---	-
(Decabromodiphenyl ether)	mg/kg	5	n.d.	---	---	-	
(Sum of PBDEs)	mg/kg	-	n.d.	---	---	1000	

Test Report

(EVERLIGHT ELECTRONICS CO., LTD.)

6-8 (NO. 6-8, ZHONGHUA RD., SHULIN DIST., NEW TAIPEI CITY 23860, TAIWAN)

	(Method)	(Unit)	MDL			(Limit)	
			No.1	No.2	No.3		
(BBP) (Butyl benzyl phthalate (BBP))		mg/kg	50	n.d.	---	---	1000
		mg/kg	50	n.d.	---	---	1000
		mg/kg	50	n.d.	---	---	1000
		mg/kg	50	n.d.	---	---	1000
		mg/kg	50	n.d.	---	---	-
		mg/kg	50	n.d.	---	---	-
		mg/kg	50	n.d.	---	---	-
		mg/kg	50	n.d.	---	---	-
		mg/kg	50	n.d.	---	---	-
		mg/kg	50	n.d.	---	---	-
(DMP) (Dimethyl phthalate (DMP)) (CAS No.: 131-11-3)		mg/kg	50	n.d.	---	---	-
		mg/kg	50	n.d.	---	---	-
(DIOP) (Diisooctyl phthalate (DIOP)) (CAS No.: 27554-26-3)		mg/kg	50	n.d.	---	---	-
		mg/kg	50	n.d.	---	---	-

IEC 62321-8: 2017
 / (With
 reference to IEC 62321-8:
 2017, analysis was performed
 by GC/MS.)

This document is issued by the Company subject to its General Conditions of Service printed overleaf, available on request or accessible at <https://www.sgs.com.tw/terms-of-service> and, for electronic format documents, subject to Terms and Conditions for Electronic Documents at <https://www.sgs.com.tw/terms-of-service>. Attention is drawn to the limitation of liability, indemnification and jurisdiction issues defined therein. Any holder of this document is advised that information contained hereon reflects the Company's findings at the time of its intervention only and within the limits of client's instruction, if any. The Company's sole responsibility is to its Client and this document does not exonerate parties to a transaction from exercising all their rights and obligations under the transaction documents. This document cannot be reproduced, except in full, without prior written approval of

Test Report

(EVERLIGHT ELECTRONICS CO., LTD.)

6-8 (NO. 6-8, ZHONGHUA RD., SHULIN DIST., NEW TAIPEI CITY 23860, TAIWAN)

(Test Items)	(Method)	(Unit)	MDL	(Result)			(Limit)
				No.1	No.2	No.3	
(DNNP) (Di-n-nonyl phthalate (DNNP)) (CAS No.: 84-76-4)	IEC 62321-8: 2017 / (With reference to IEC 62321-8: 2017, analysis was performed by GC/MS.)	mg/kg	50	n.d.	---	---	-
(HBCDD) (- HBCDD, - HBCDD, - HBCDD) (Hexabromocyclododecane (HBCDD) and all major diastereoisomers identified (- HBCDD, - HBCDD, - HBCDD)) (CAS No.: 25637-99-4, 3194-55-6 (134237-51-7, 134237-50-6, 134237-52-8))	IEC 62321: 2008 / (With reference to IEC 62321: 2008, analysis was performed by GC/MS.)	mg/kg	5	n.d.	---	---	-
(F) (Fluorine (F)) (CAS No.: 14762-94-8)	BS EN 14582: 2016 (With reference to BS EN 14582: 2016, analysis was performed by IC.)	mg/kg	50	n.d.	---	---	-
(Cl) (Chlorine (Cl)) (CAS No.: 22537-15-1)		mg/kg	50	317	---	---	-
(Br) (Bromine (Br)) (CAS No.: 10097-32-2)		mg/kg	50	n.d.	---	---	-
(I) (Iodine (I)) (CAS No.: 14362-44-8)		mg/kg	50	n.d.	---	---	-
(PFOS and its salts) (CAS No.: 1763-23-1 and its salts)	CEN/TS 15968: 2010 (With reference to CEN/TS 15968: 2010, analysis was performed by LC/MS/MS.)	mg/kg	0.01	n.d.	---	---	-
(PFOA and its salts) (CAS No.: 335-67-1 and its salts)	CEN/TS 15968: 2010 (With reference to CEN/TS 15968: 2010, analysis was performed by LC/MS/MS.)	mg/kg	0.01	n.d.	---	---	-

Test Report

(EVERLIGHT ELECTRONICS CO., LTD.)

6-8 (NO. 6-8, ZHONGHUA RD., SHULIN DIST., NEW TAIPEI CITY 23860, TAIWAN)

(Test Items)	(Method)	(Unit)	MDL	(Result)			(Limit)
				No.1	No.2	No.3	
(Polycyclic Aromatic Hydrocarbons) (PAHs)							
(a) (Benzo[a]pyrene) (CAS No.: 50-32-8)	AfPS GS 2019:01 PAK / (With reference to AfPS GS 2019:01 PAK, analysis was performed by GC/MS.)	mg/kg	0.2	n.d.	---	---	
(e) (Benzo[e]pyrene) (CAS No.: 192-97-2)		mg/kg	0.2	n.d.	---	---	
(Benzo[a]anthracene) (CAS No.: 56-55-3)		mg/kg	0.2	n.d.	---	---	
(b) (Benzo[b]fluoranthene) (CAS No.: 205-99-2)		mg/kg	0.2	n.d.	---	---	
(j) (Benzo[j]fluoranthene) (CAS No.: 205-82-3)		mg/kg	0.2	n.d.	---	---	
(k) (Benzo[k]fluoranthene) (CAS No.: 207-08-9)		mg/kg	0.2	n.d.	---	---	
(Chrysene) (CAS No.: 218-01-9)		mg/kg	0.2	n.d.	---	---	
(Dibenzo[a,h]anthracene) (CAS No.: 53-70-3)		mg/kg	0.2	n.d.	---	---	
(Benzo[g,h,i]perylene) (CAS No.: 191-24-2)		mg/kg	0.2	n.d.	---	---	
(Indeno[1,2,3-c,d]pyrene) (CAS No.: 193-39-5)		mg/kg	0.2	n.d.	---	---	
(Anthracene) (CAS No.: 120-12-7)		mg/kg	0.2	n.d.	---	---	
(Fluoranthene) (CAS No.: 206-44-0)		mg/kg	0.2	n.d.	---	---	
(Phenanthrene) (CAS No.: 85-01-8)		mg/kg	0.2	n.d.	---	---	
(Pyrene) (CAS No.: 129-00-0)		mg/kg	0.2	n.d.	---	---	
(Naphthalene) (CAS No.: 91-20-3)		mg/kg	0.2	n.d.	---	---	
15 (Sum of 15 PAHs)		mg/kg	-	n.d.	---	---	

Test Report

(EVERLIGHT ELECTRONICS CO., LTD.)

6-8 (NO. 6-8, ZHONGHUA RD., SHULIN DIST., NEW TAIPEI CITY 23860, TAIWAN)

(Test Items)	(Method)	(Unit)	MDL	(Result)			(Limit)
				No.1	No.2	No.3	
(Be) (Beryllium (Be)) (CAS No.: 7440-41-7)	US EPA 3052: 1996 (With reference to US EPA 3052: 1996, analysis was performed by ICP-OES.)	mg/kg	2	n.d.	---	---	-
(Cd) (Cadmium (Cd))	IEC 62321-5: 2013 (IEC 62321-5: 2013 application of modified digestion by surface etching, analysis was performed by ICP-OES.)	mg/kg	2	---	n.d.	---	100
(Pb) (Lead (Pb))	IEC 62321-5: 2013 (IEC 62321-5: 2013 application of modified digestion by surface etching, analysis was performed by ICP-OES.)	mg/kg	2	---	20.6	---	1000
(Hg) (Mercury (Hg))	IEC 62321-4: 2013+ AMD1: 2017 (IEC 62321-4: 2013+AMD1: 2017 application of modified digestion by surface etching, analysis was performed by ICP-OES.)	mg/kg	2	---	n.d.	---	1000
(Cd) (Cadmium (Cd))	IEC 62321-5: 2013 (With reference to IEC 62321-5: 2013, analysis was performed by ICP-OES.)	mg/kg	2	---	---	n.d.	100
(Pb) (Lead (Pb))	IEC 62321-5: 2013 (With reference to IEC 62321-5: 2013, analysis was performed by ICP-OES.)	mg/kg	2	---	---	37.6	1000
(Hg) (Mercury (Hg))	IEC 62321-4: 2013+ AMD1: 2017 (With reference to IEC 62321-4: 2013+ AMD1: 2017, analysis was performed by ICP-OES.)	mg/kg	2	---	---	n.d.	1000

Test Report

(EVERLIGHT ELECTRONICS CO., LTD.)

6-8 (NO. 6-8, ZHONGHUA RD., SHULIN DIST., NEW TAIPEI CITY 23860, TAIWAN)

(Test Items)	(Method)	(Unit)	MDL	(Result)			(Limit)
				No.1	No.2	No.3	
(Hexavalent Chromium) Cr(VI) (#2)	IEC 62321-7-1: 2015 - (With reference to IEC 62321-7-1: 2015, analysis was performed by UV-VIS.)	µg/cm ²	0.1	---	n.d.	n.d.	-

(Test Items)	(Method)	(Unit)	MDL	(Result)	(Limit)
				No.4	
(Be) (Beryllium (Be)) (CAS No.: 7440-41-7)	US EPA 3050B: 1996 (With reference to US EPA 3050B: 1996, analysis was performed by ICP-OES.)	mg/kg	2	n.d.	-

(Note)

1. mg/kg = ppm 0.1wt% = 0.1% = 1000ppm
2. MDL = Method Detection Limit ()
3. n.d. = Not Detected (); MDL / Less than MDL
4. "-" = Not Regulated ()
5. "---" = Not Conducted ()
6. (#2) =
 - a. 0.13 µg/cm² . / The sample is positive for Cr(VI) if the Cr(VI) concentration is greater than 0.13 µg/cm². The sample coating is considered to contain Cr(VI).
 - b. n.d. (0.10 µg/cm²) . / The sample is negative for Cr(VI) if Cr(VI) is n.d. (concentration less than 0.10 µg/cm²). The coating is considered a non-Cr(VI) based coating
 - c. 0.10 0.13 µg/cm² . / The result between 0.10 µg/cm² and 0.13 µg/cm² is considered to be inconclusive - unavoidable coating variations may influence the determination.
7. ILAC-G8:09/2019 (w=0)
(Unless otherwise stated, the decision rule for conformity reporting is based on Binary Statement for Simple Acceptance Rule (w=0) stated in ILAC-G8:09/2019. According to this rule, the judgement of conformity is based on the comparing test results with limits.)



(No.): ETR24305709

(Date): 12-Apr-2024

(Page): 9 of 23

Test Report

(EVERLIGHT ELECTRONICS CO., LTD.)

6-8 (NO. 6-8, ZHONGHUA RD., SHULIN DIST., NEW TAIPEI CITY 23860, TAIWAN)

PAHs Remark

(A FPS): GS PAHs

AfPS (German commission for Product Safety): GS PAHs requirements

	1 (Category 1)	2 (Category 2)	3 (Category 3)
--	----------------	----------------	----------------

(Parameter)





(No.): ETR24305709

(Date): 12-Apr-2024

(Page): 10 of 23

Test Report

(EVERLIGHT ELECTRONICS CO., LTD.)
6-8 (NO. 6-8, ZHONGHUA RD., SHULIN DIST., NEW TAIPEI CITY 23860, TAIWAN)

PFAS Remark

PFAS

PFAS

PFAS
PFAS

PFAS

(Group Name)

(Substance Name)

CAS No.

(PFOS-K)

2795-39-3

Potassium perfluorooctanesulfonate (PFOS-K)

(PFOS-Li)

29457-72-5

Perfluorooctanesulfonic acid, lithium salt
(PFOS-Li)

(PFOS-NH₄)

Perfluorooctanesulfonic acid, ammonium salt
(PFOS-NH₄)

251099-16-8





(No.): ETR24305709

(Date): 12-Apr-2024

(Page): 11 of 23

Test Report

(EVERLIGHT ELECTRONICS CO., LTD.)
6-8 (NO. 6-8, ZHONGHUA RD., SHULIN DIST., NEW TAIPEI CITY 23860, TAIWAN)

(Group Name)	(Substance Name)	CAS No.
	(POSF) Perfluorooctane sulfonyl fluoride (POSF)	307-35-7
PFOS, & (PFOS, its salts & derivatives)	(PFOS-Na) Perfluorooctanesulfonic acid, sodium salt (PFOS-Na)	4021-47-0
	Piperidine 1,1,2,2,3,3,4,4,5,5,6,6,7,7,8,8,8- heptadecafluorooctanesulfonate	71463-74-6
	(PFOA-Na) Sodium perfluorooctanoate (PFOA-Na)	335-95-5



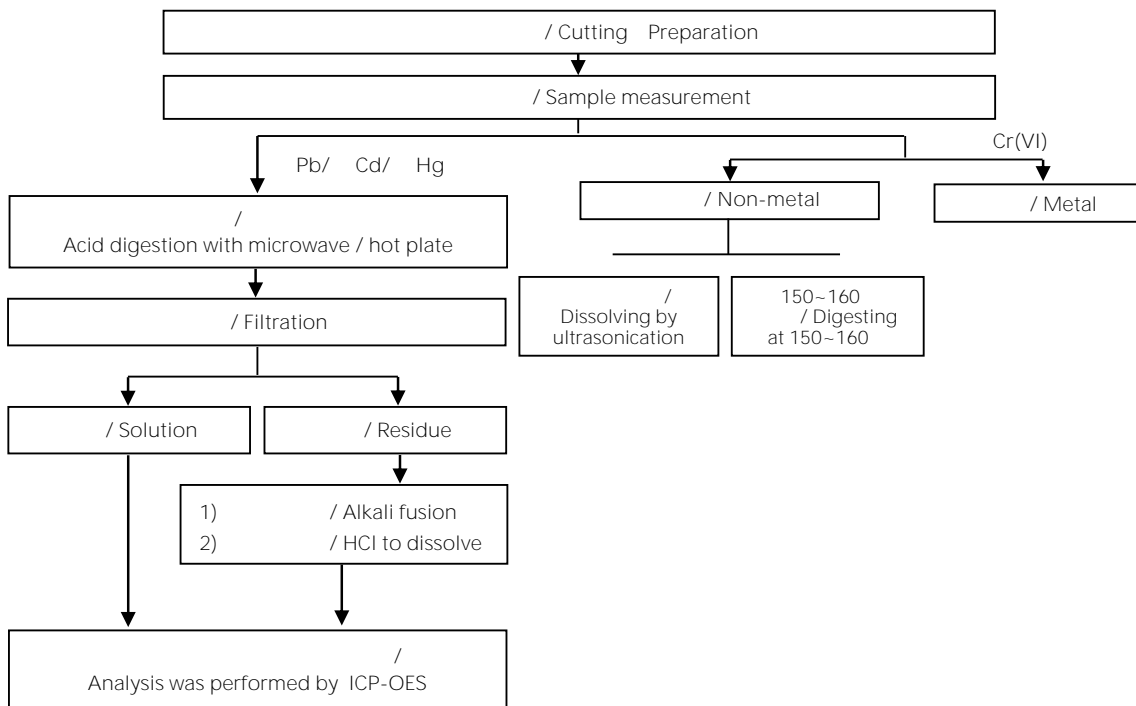
Test Report

(EVERLIGHT ELECTRONICS CO., LTD.)
6-8 (NO. 6-8, ZHONGHUA RD., SHULIN DIST., NEW TAIPEI CITY 23860, TAIWAN)

/ Analytical flow chart of heavy metal

These samples were dissolved totally by pre-conditioning method according to below flow chart.

Cr⁶⁺ test method excluded





Test Report

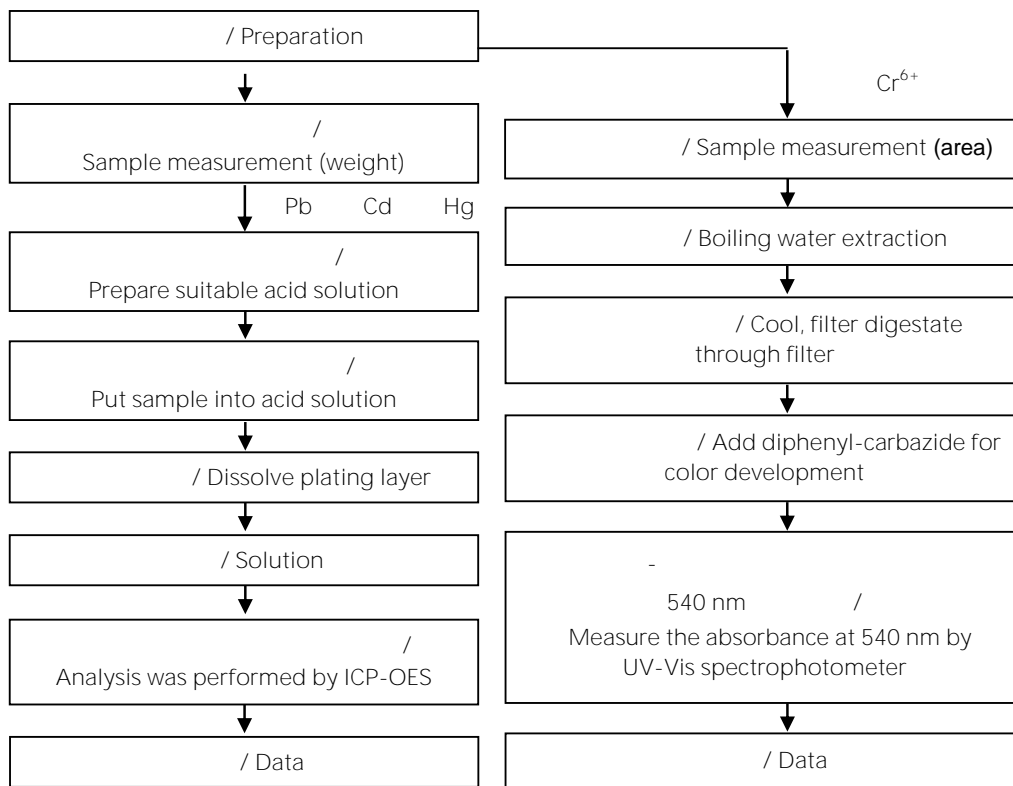
(EVERLIGHT ELECTRONICS CO., LTD.)
6-8 (NO. 6-8, ZHONGHUA RD., SHULIN DIST., NEW TAIPEI CITY 23860, TAIWAN)

/ Flow chart of stripping method for metal analysis

/ The plating layer

of samples were dissolved totally by pre-conditioning method according to below flow chart.

Cr⁶⁺ test method excluded





Test Report

(Page): 14 of 23

This document is issued by the Company subject to its General Conditions of Service printed overleaf, available on request or accessible at <https://www.sgs.com.tw/terms-of-service> and, for electronic format documents, subject to Terms and Conditions for Electronic Documents at <https://www.sgs.com.tw/terms-of-service>. Attention is drawn to the limitation of liability, indemnification and jurisdiction issues defined therein. Any holder of this document is advised that information contained hereon reflects the Company's findings at the time of its intervention only and within the limits of client's instruction, if any. The Company's sole responsibility is to its Client and this document does not exonerate parties to a transaction from exercising all their rights and obligations under the transaction documents. This document cannot be reproduced, except in full, without prior written approval of





(No.): ETR24305709

(Date): 12-Apr-2024

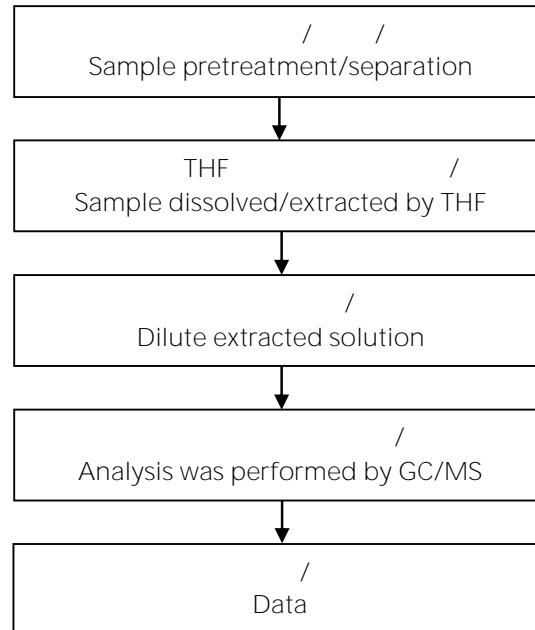
(Page): 15 of 23

Test Report

(EVERLIGHT ELECTRONICS CO., LTD.)
6-8 (NO. 6-8, ZHONGHUA RD., SHULIN DIST., NEW TAIPEI CITY 23860, TAIWAN)

/ Analytical flow chart - Phthalate

/Test method: IEC 62321-8





(No.): ETR24305709

(Date): 12-Apr-2024

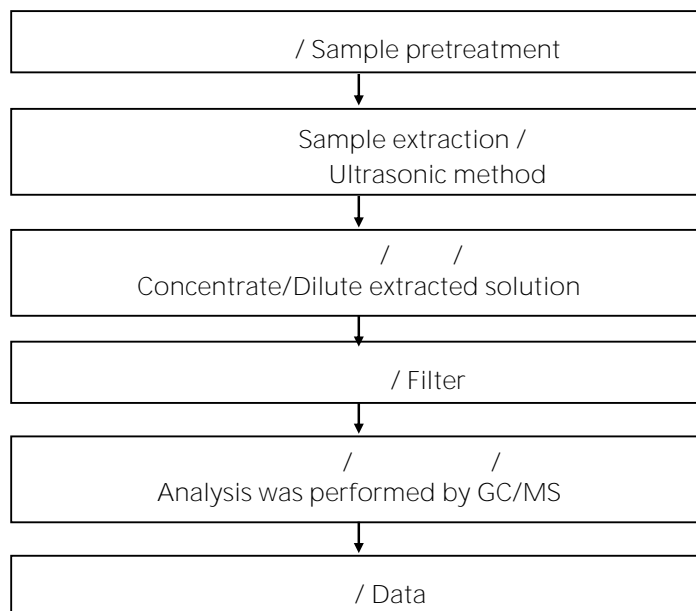
(Page): 16 of 23

Test Report

(EVERLIGHT ELECTRONICS CO., LTD.)

6-8 (NO. 6-8, ZHONGHUA RD., SHULIN DIST., NEW TAIPEI CITY 23860, TAIWAN)

/ Analytical flow chart - HBCDD

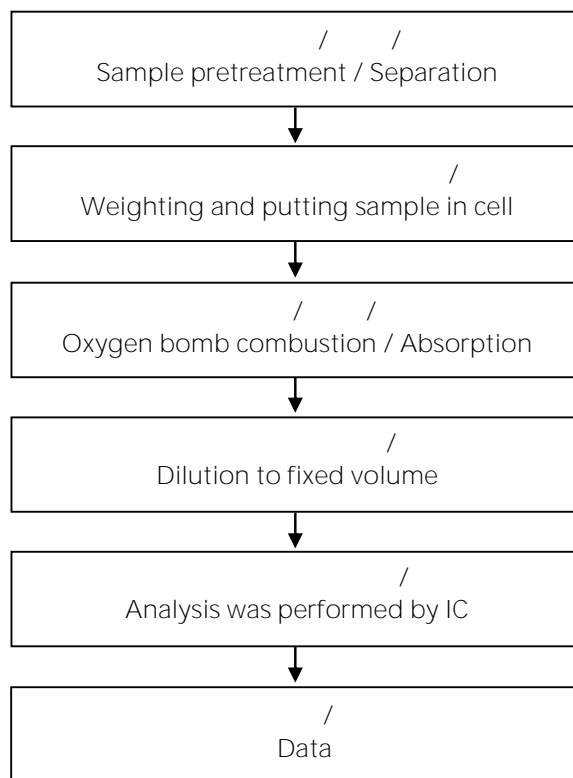




Test Report

(EVERLIGHT ELECTRONICS CO., LTD.)
6-8 (NO. 6-8, ZHONGHUA RD., SHULIN DIST., NEW TAIPEI CITY 23860, TAIWAN)

/ Analytical flow chart - Halogen





(No.): ETR24305709

(Date): 12-Apr-2024

(Page): 18 of 23

Test Report

(EVERLIGHT ELECTRONICS CO., LTD.)

6-8 (NO. 6-8, ZHONGHUA RD., SHULIN DIST., NEW TAIPEI CITY 23860, TAIWAN)

(/ /) / Analytical flow
chart - PFAS (including PFOA/PFOS/its related compound, etc.)





(No.): ETR24305709

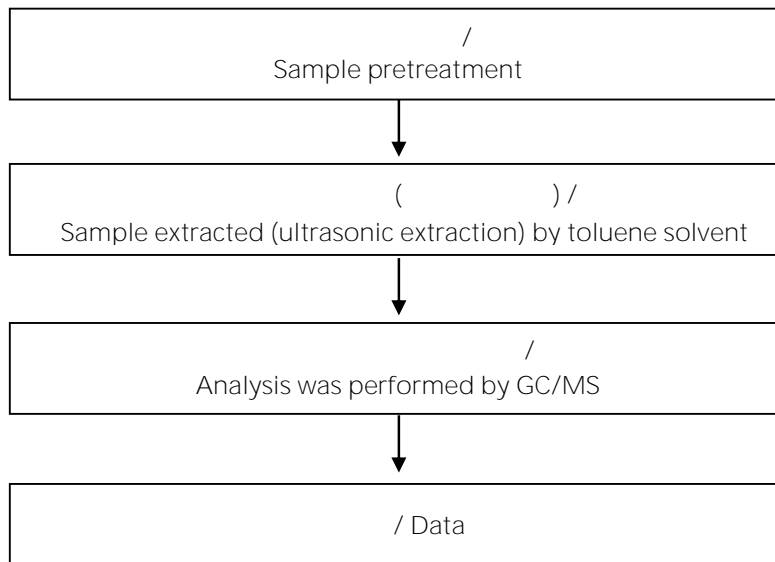
(Date): 12-Apr-2024

(Page): 19 of 23

Test Report

(EVERLIGHT ELECTRONICS CO., LTD.)
6-8 (NO. 6-8, ZHONGHUA RD., SHULIN DIST., NEW TAIPEI CITY 23860, TAIWAN)

/
Analytical flow chart - PAHs (Polycyclic Aromatic Hydrocarbons)





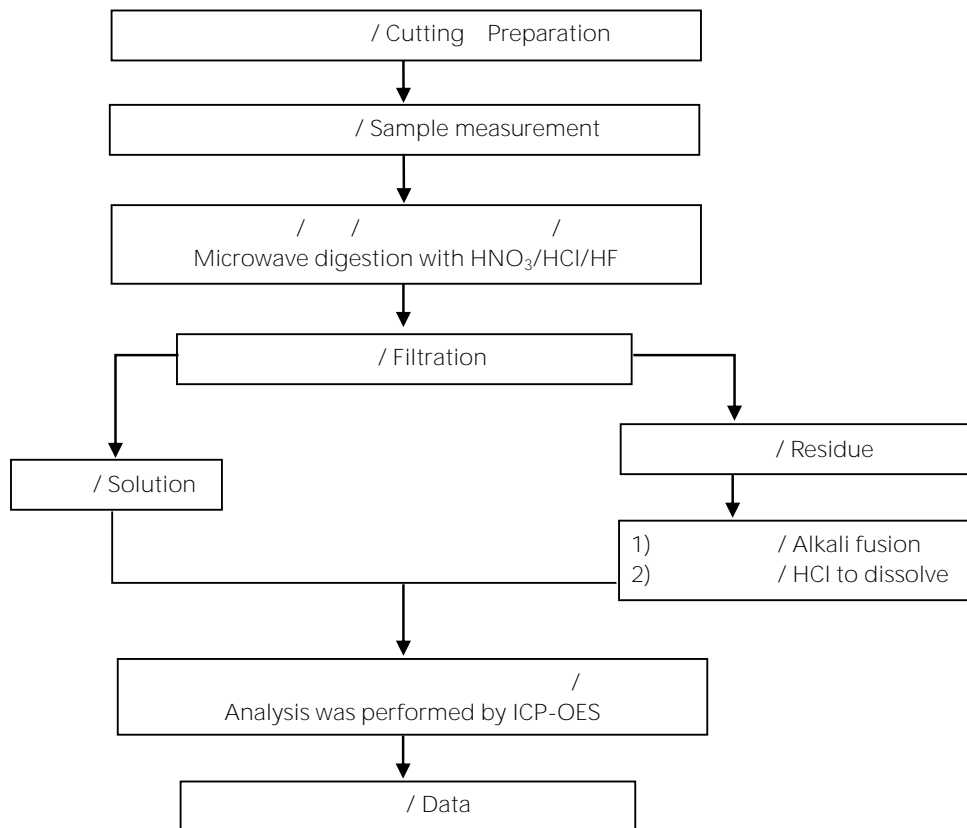
Test Report

(EVERLIGHT ELECTRONICS CO., LTD.)
6-8 (NO. 6-8, ZHONGHUA RD., SHULIN DIST., NEW TAIPEI CITY 23860, TAIWAN)

() / Analytical flow chart of elements (Heavy metal included)

These samples were dissolved totally by pre-conditioning method according to below flow chart.

/Reference method US EPA 3051A US EPA 3052



* US EPA 3051A

/ US EPA 3051A method does not add HF.





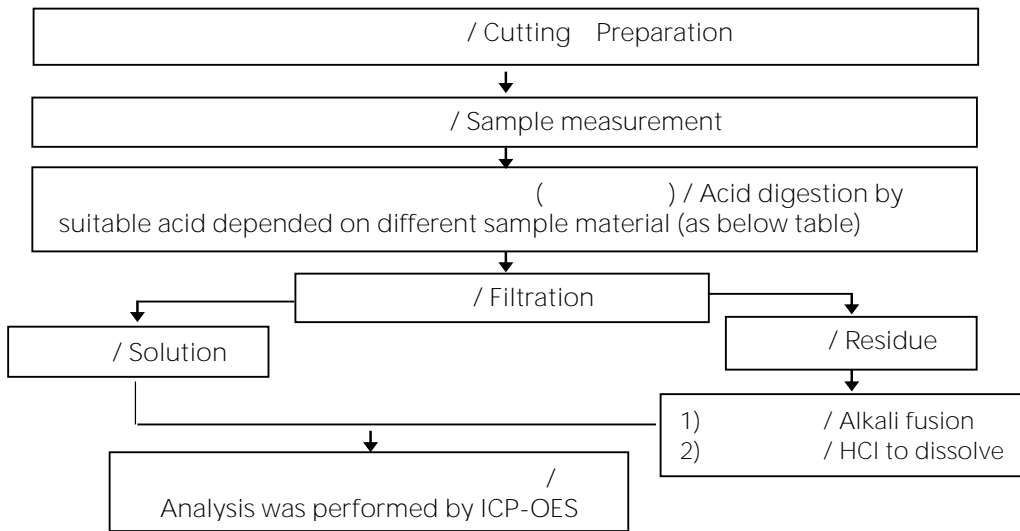
Test Report

(EVERLIGHT ELECTRONICS CO., LTD.)
6-8 (NO. 6-8, ZHONGHUA RD., SHULIN DIST., NEW TAIPEI CITY 23860, TAIWAN)

ICP-OES

(Flow chart of digestion for the elements analysis performed by ICP-OES)

/ These samples were dissolved totally by pre-conditioning method according to below flow chart.



, , , / Steel, copper, aluminum, solder	/ Aqua regia, HNO ₃ , HCl, HF, H ₂ O ₂
/ Glass	/ HNO ₃ , HF
, , , / Gold, platinum, palladium, ceramic	/ Aqua regia
/ Silver	/ HNO ₃
/ Plastic	/ H ₂ SO ₄ , H ₂ O ₂ , HNO ₃



Test Report

(Page): 22 of 23

This document is issued by the Company subject to its General Conditions of Service printed overleaf, available on request or accessible at <https://www.sgs.com.tw/terms-of-service> and, for electronic format documents, subject to Terms and Conditions for Electronic Documents at <https://www.sgs.com.tw/terms-of-service>. Attention is drawn to the limitation of liability, indemnification and jurisdiction issues defined therein. Any holder of this document is advised that information contained hereon reflects the Company's findings at the time of its intervention only and within the limits of client's instruction, if any. The Company's sole responsibility is to its Client and this document does not exonerate parties to a transaction from exercising all their rights and obligations under the transaction documents. This document cannot be reproduced, except in full, without prior written approval of





(No.): ETR24305709

(Date): 12-Apr-2024

(Page): 23 of 23

Test Report

(EVERLIGHT ELECTRONICS CO., LTD.)

6-8 (NO. 6-8, ZHONGHUA RD., SHULIN DIST., NEW TAIPEI CITY 23860, TAIWAN)

ETR24305709 NO.3



** (End of Report) **

